

2003

2004

2005

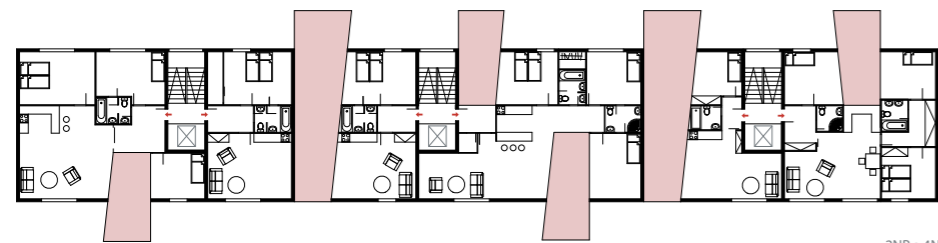
2006

2007

2008

2009

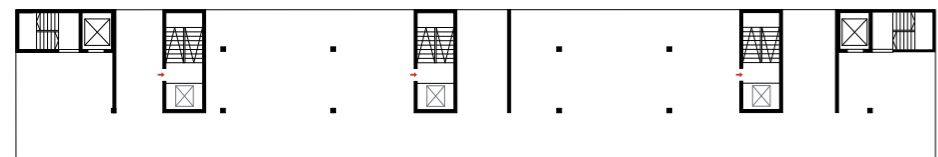
2010



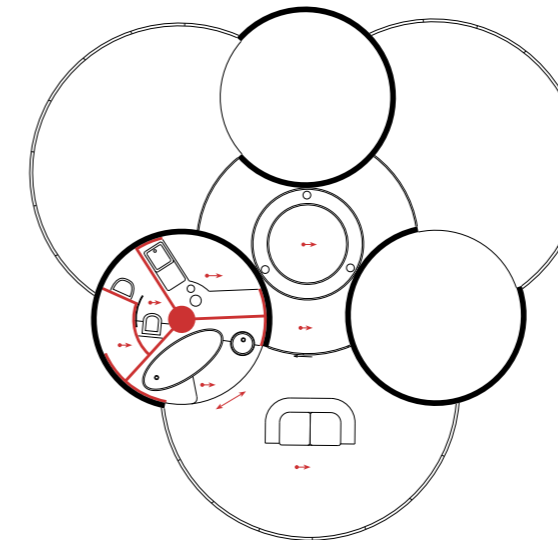
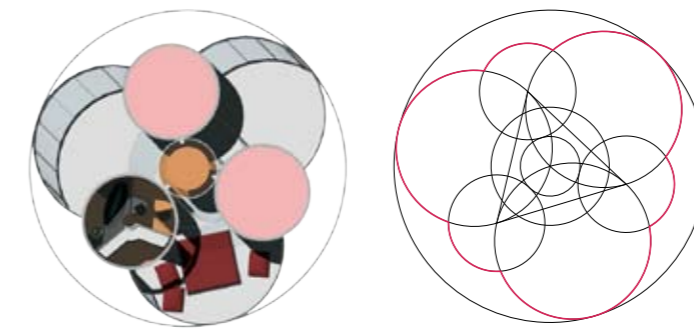
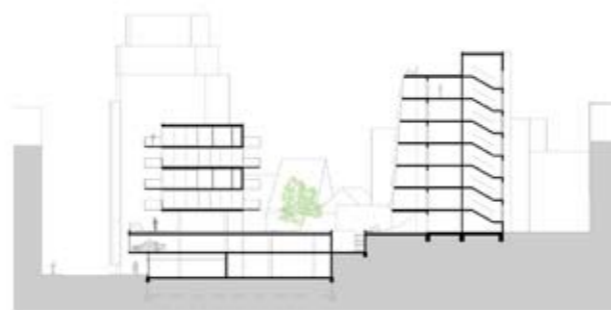
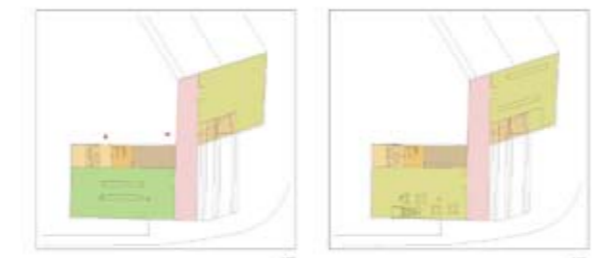
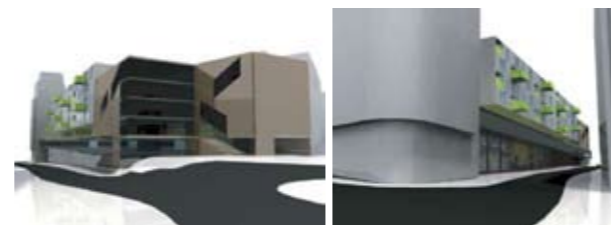
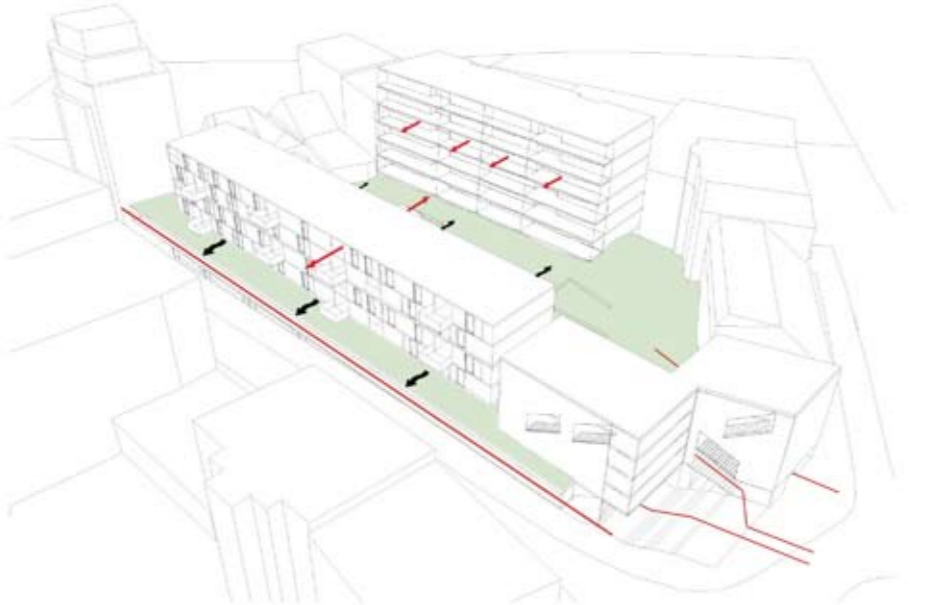
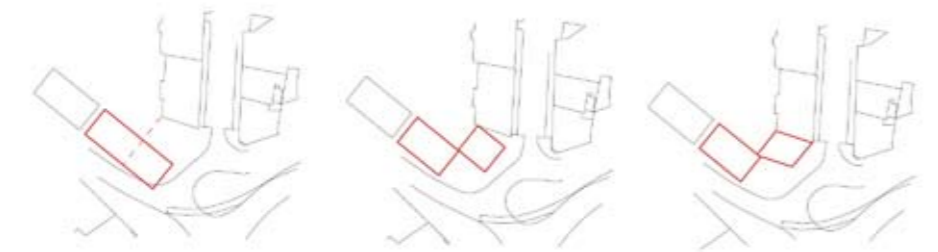
2NP a 4NP



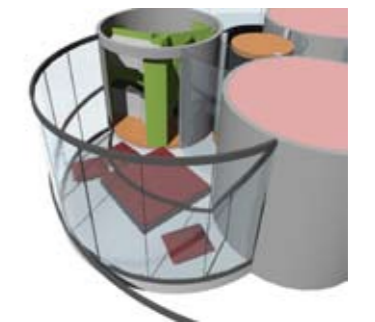
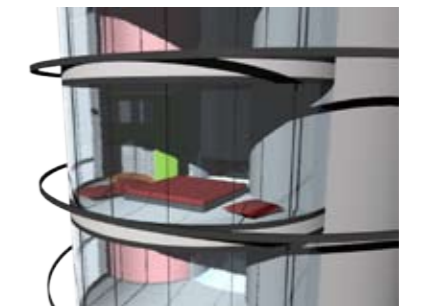
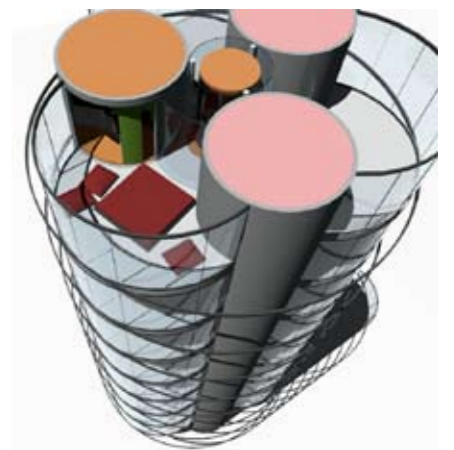
1NP a 3NP



průchozí přízemí



— výťah  
 — kuchyň  
 — wc  
 — předsíň  
 — ložna  
 — koupelna  
 — prostor bytu



The system divides the living quarters into two parts - a permanent part which is lived in and other utilities, needed only temporarily. Utilities are hidden in a tube and swirl around the installation through all floors. The whole complex consists of three flats which are accessible from a lift being the most economical vertical communication. In case of fire or emergency fire ladders are installed from outside the building.

Each flat offers small, but visually comfortable space for one or two people. For sleeping there is a fold-out sofa.

Rotating unit is designed in such a sequence to comply with the human needs (considering time-related activities). The sequence is as following: kitchen, lavatory with washbasin, wardrobe/dressing room and bathroom which is the first if we take it from the opposite direction. The cylinder in which the rotating units are fitted at the same time constitute main constructional columns of the vertical housing. On the ground floor there is storage space under the rotating tubes (f.e. bicycle).

## 12 APARTMENT BUILDING/ EVROPSKÁ SREET

PLACE: LIBEREC CITY, EVROPSKÁ STREET, CZECH REPUBLIC  
 LEADER: DOC. MIROSLAV MELENA, ING. AKAD. ARCH. VÁCLAV KRÁLÍČEK  
 3RD YEAR, FACULTY OF ART AND ARCHITECTURE, TUL LIBEREC CITY

## 13 MINIMAL FLAT

SHORT ON TASK TOPIC - MINIMUM HOUSING  
 LEADER: DOC. ING. ARCH. JÁN STRCULA  
 4TH YEAR, FACULTY OF ART AND ARCHITECTURE, TUL LIBEREC CITY